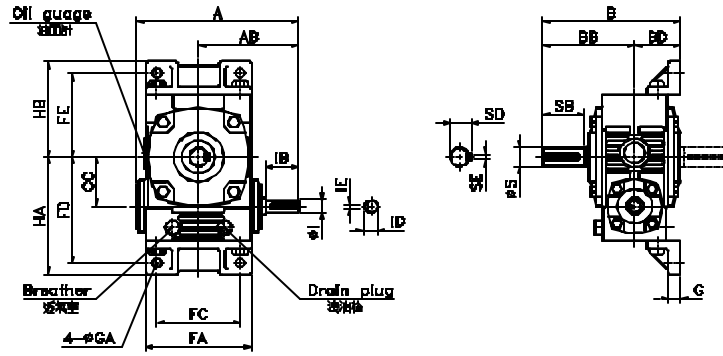


BHV 40~135

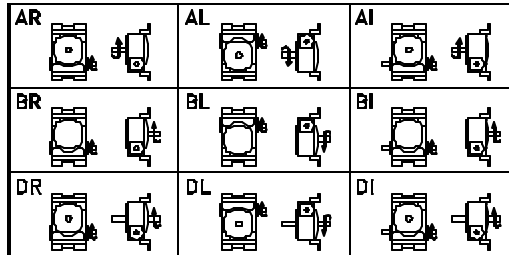


BHV 135 - 60 AR  
1 2 3 4

1. (Type)
2. (Size)
3. (Ratio)
4. (S. L.)



S.L. (Shaft Location)

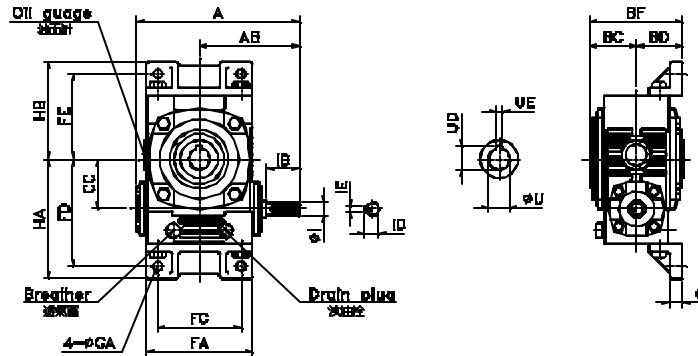


BHVO 50~135

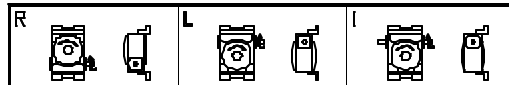


BHVO 135 - 60 R  
1 2 3 4

1. (Type)
2. (Size)
3. (Ratio)
4. (S. L.)



S.L. (Shaft Location)



Dim. Table

Size	Ratio	A	AB	B	BB	BC	BD	BF	CC	FA	FC	FD	FE	G	GA	HA	HB	( <sup>1</sup> ) (kg)	
40	1:10	160	96	131	84	45	47	92	40	104	80	96	75	10	10	108	87	0.18	4.7
50	1:15	175	105	145	95	49.5	50	99.5	50	115	90	110	90	14	11	123	102	0.31	5.7
60	1:20	195	120	165	110	56	55	111	60	125	100	129	102	15	11	144	116	0.44	8.2
70	1:30	234	140	195	130	65.5	65	130.5	70	155	120	155	120	18	15	170	135	0.70	14.2
80	1:40	264	160	212	140	72	72	144	80	174	140	180	132	18	15	195	147	0.99	19
100	1:50	322	190	260	170	87.5	90	177.5	100	224	190	215	155	20	15	233	172	1.87	40
120	1:60	385	230	290	190	100	100	200	120	264	220	255	195	22	18	273	217	4.1	57
135		435	260	320	210	108	110	218	135	304	260	285	230	23	18	306	252	4.4	80

Size	Ratio	Input Shaft				Output Shaft				Output Hollow		
		I(h6)	IB	ID	IE	S(h6)	SB	SD	SE	U	UD	UE
40	1:10	12	28	13.5	4	15	35	17	5	20	23	6
50	1:15	12	30	13.5	4	17	40	19	5	25	28	7
60	1:20	15	40	17	5	22	50	25	7	25	28	7
70	1:30	18	40	20	5	28	60	31	7	30	33	7
80	1:40	22	50	25	7	32	65	35	10	35	38	10
100	1:50	25	50	28	7	38	75	41	10	40	43	12
120	1:60	30	65	33	7	45	85	48	12	45	48.5	14
135		35	75	38	10	55	95	60	15	55	60	15