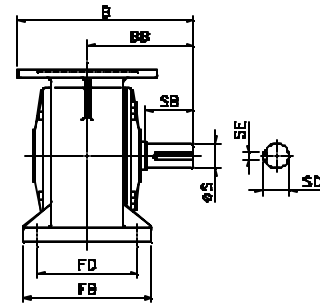
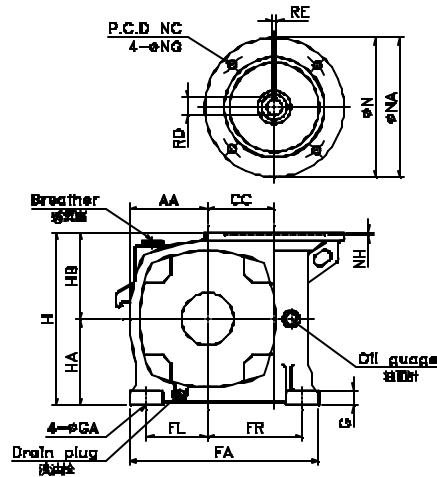


TKIE 50-135

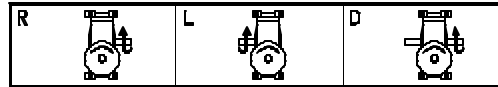


TKIE 120 - 60 R - 3HP
1 2 3 4 5

1. (Type)
2. (Size)
3. (Ratio)
4. (S. L.)
5. (Power)



S.L. (Shaft Location)



Dim. Table

Size	Ratio	AA	B	BB	CC	FA	FB	FD	FL	FR	G	GA	H	HA	HB	(l)	(kg)	
50	1:10	66	175	95	50	161	125	100	53	77	15	11	156	70	86	0.38		
60	1:15	70	190	100	60	205	130	105	67	98	20	11	180	90	90	0.5	84	
70	1:20	83	210	130	70	230	150	120	75	115	20	15	213	95	118	0.8	13.7	
	1:30	230																
80	1:40	100	240	140	80	264	160	125	90	125	20	15	234	105	129	1.0	17.7	
	1:50	115	270	170	100	310	195	155	100	150	25	15	265	135	160	1.8	35.9	
100	1:60	295	148	315	190	120	360	230	180	120	180	28	18	338	160	178	3.3	56.3
		335																
120	1:60	360	155	335	210	135	390	250	200	130	200	30	18	365	170	194	1.2	78.5
		360																

Size	Ratio	Input Bore			Input Adapter				Output Shaft					Power
		R	RD	RE	N _(H7)	NA	NC	NG	NH	S _(h8)	SB	SD	SE	
50	1:10	11	12.8	4	110	160	130	10	5	17	40	19	5	0.25HP
	1:15	11	12.8	4	110	160	130	10	5	22	50	25	7	0.25HP
60	1:20	14	16.3	5	110	160	130	10	5	28	60	31	7	0.5HP
	1:30	14	16.3	5	110	160	130	10	5	28	60	31	7	0.5HP
70	1:40	19	21.8	6	130	200	165	12	5	32	65	35	10	1HP
	1:50	19	21.8	6	130	200	165	12	5	32	65	35	10	1HP
80	1:60	24	27.3	8	180	250	215	15	5	38	75	41	10	2HP
		24	27.3	8	180	250	215	15	5	38	75	41	10	2HP
100	1:60	28	31.3	8	180	250	215	15	5	45	85	48	12	3HP
		28	31.3	8	180	250	215	15	5	45	85	48	12	3HP
120	1:60	28	31.3	8	180	250	215	15	5	55	95	60	15	5HP
		28	31.3	8	180	250	215	15	5	55	95	60	15	5HP
135	1:60	38	41.3	10	230	300	265	15	5	55	95	60	15	7.5HP
		38	41.3	10	230	300	265	15	5	55	95	60	15	7.5HP