

## SPM010P-AT-B

### Multicrystalline Silicon Photovoltaic Module

#### FEATURE:

- TUV certification
- UL certification
- High power module using 6" Multicrystalline solar cell.
- Using low iron tempered glass, EVA laminate PET backsheet.
- Anodize aluminum frame protected.
- 10 years limited warranty of 90% power output and 25 years limited warranty of 80% power output.

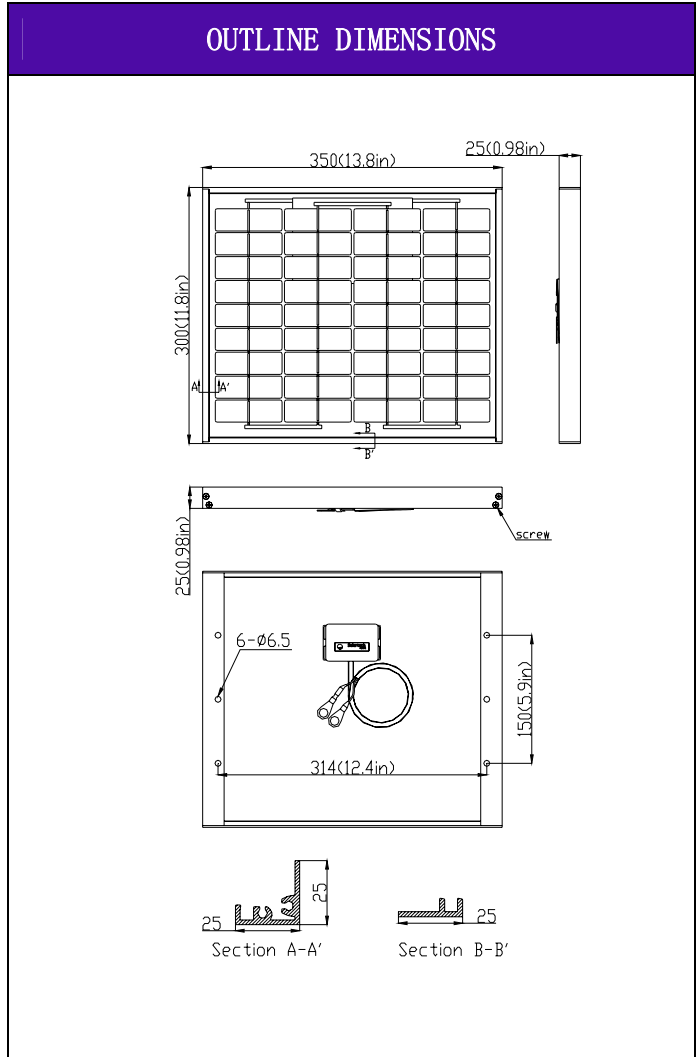
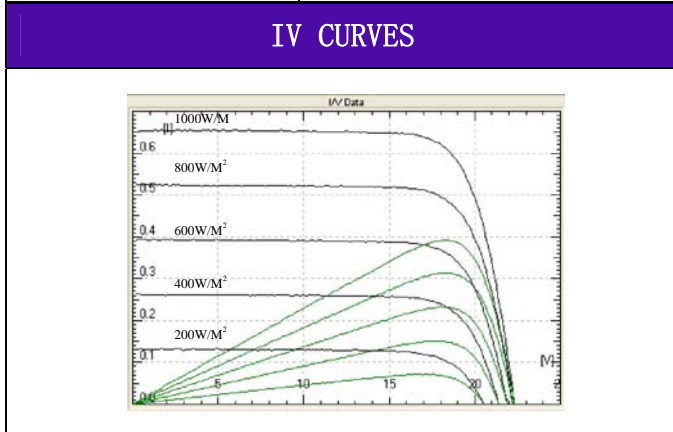


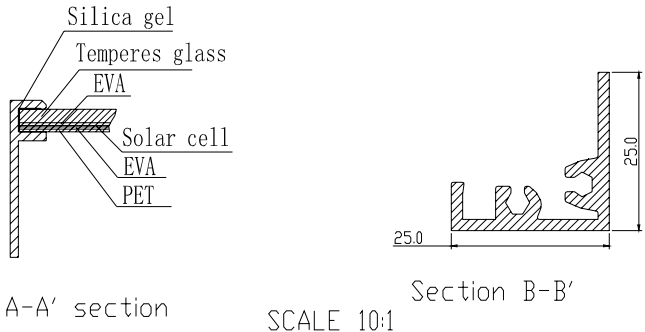
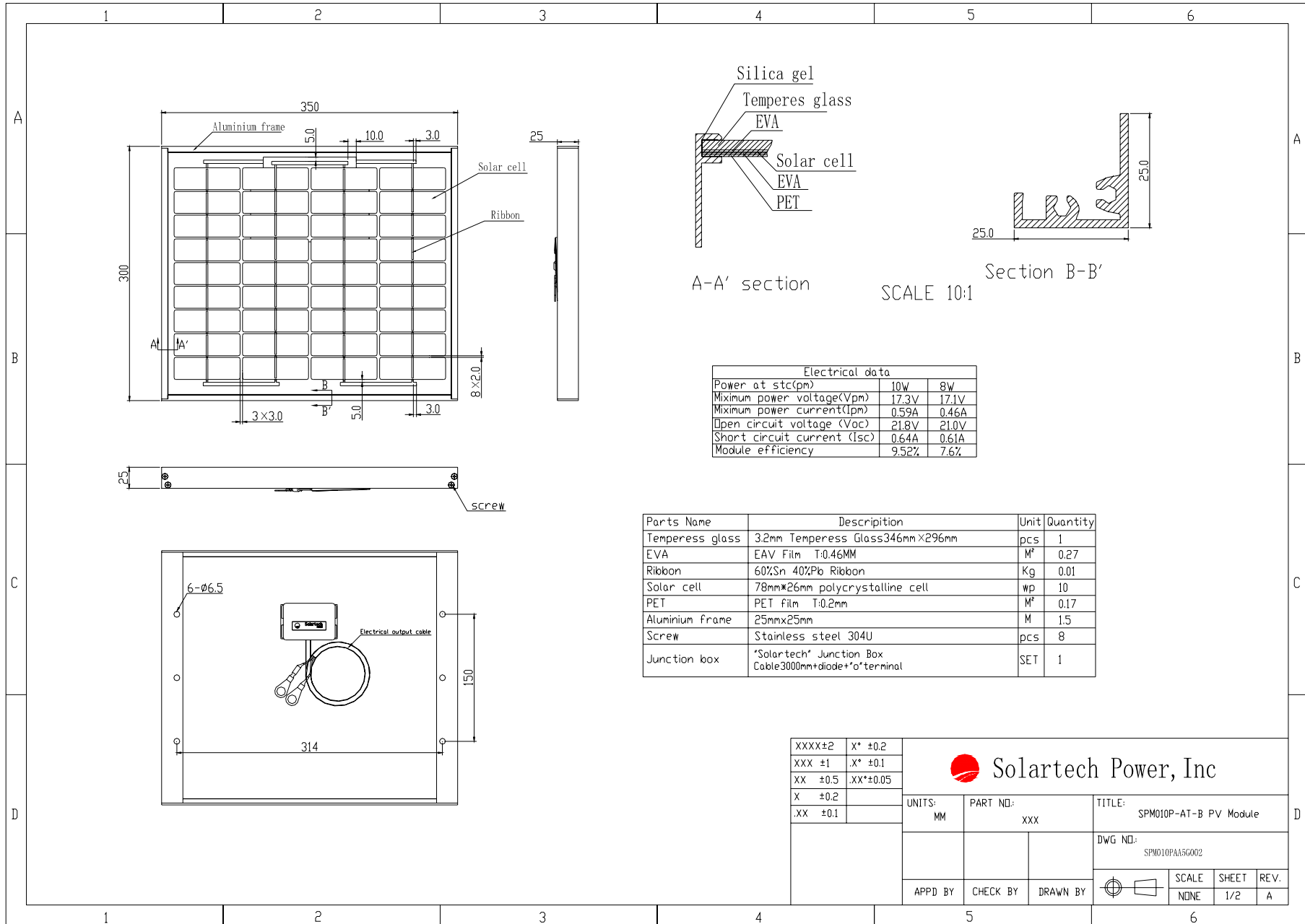
| ELECTRICAL CHARACTERISTICS  |  |              |               |
|-----------------------------|--|--------------|---------------|
|                             | SPM010P-AT-B   | SPM08P-AT-B  |               |
| Power at STC (Pm)           | 10W  | 8W           |               |
| Maximum power voltage (Vpm) | 17.3V  | 17.1V        |               |
| Maximum power current (Ipm) | 0.59A  | 0.46A        |               |
| Open circuit voltage (Voc)  | 21.8V  | 21.0V        |               |
| Short circuit current (Isc) | 0.64A  | 0.61A        |               |
| Tolerance                   | ±5%  | ±5%          |               |
| Module efficiency           | 9.52%  | 7.6%         |               |
| Maximum system voltage      | 1000V DC   |              |               |
| Standard test conditions    | Temperature 25°C, Irradiance 1000W/m <sup>2</sup> , AM=1.5 |              |               |
| Temperature coefficient     | Isc:0.05%/K  | Voc:-0.36%/K | Pmax:-0.46%/K |

| Specifications             |  |
|----------------------------|--|
| Cell                       | Multicrystalline silicon solar cell, (78mmx26mm) |
| No. of cell and connection | 36 (4x9)   |
| Dimension                  | 350mm (13.8in) x300mm (11.8in)x25mm (0.98in)     |
| Weight                     | 1.5KG  |

| AMBIENT CONDITIONS    |                |
|-----------------------|----------------|
| Operating Temperature | -40°C to +85°C |
| Storage Humidity      | <90%           |

| OUT PUT                 |               |
|-------------------------|---------------|
| Type of output terminal | Junction box  |
| Cable                   | Length 3000mm |





| Electrical data                          |       |       |
|--|-------|-------|
| Power at stc(p <sub>m</sub> )            | 10W   | 8W    |
| Maximum power voltage(V <sub>pm</sub> )  | 17.3V | 17.1V |
| Maximum power current(I <sub>pm</sub> )  | 0.59A | 0.46A |
| Open circuit voltage (V <sub>oc</sub> )  | 21.8V | 21.0V |
| Short circuit current (I <sub>sc</sub> ) | 0.64A | 0.61A |
| Module efficiency                        | 9.52% | 7.6%  |

| Parts Name      | Description  | Unit           | Quantity |
|-----------------|--|----------------|----------|
| Temperess glass | 3.2mm Temperess Glass346mm×296mm                         | pcs            | 1        |
| EVA             | EAV Film T:0.46MM  | M <sup>2</sup> | 0.27     |
| Ribbon          | 60%Sn 40%Pb Ribbon                                       | Kg             | 0.01     |
| Solar cell      | 78mm*26mm polycrystalline cell                           | wp             | 10       |
| PET             | PET film T:0.2mm   | M <sup>2</sup> | 0.17     |
| Aluminium frame | 25mmx25mm  | M              | 1.5      |
| Screw           | Stainless steel 304U                                     | pcs            | 8        |
| Junction box    | "Solartech" Junction Box<br>Cable3000mm+diode*o*terminal | SET            | 1        |

|          |           |          |                             |        |                |                        |
|----------|-----------|----------|-----------------------------|--------|----------------|------------------------|
| XXXX±2   | X* ±0.2   |          | <b>Solartech Power, Inc</b> |        |                |                        |
| XXX ±1   | .X* ±0.1  |          |                             |        |                |                        |
| XX ±0.5  | .XX*±0.05 |          |                             |        |                |                        |
| X ±0.2   |           |          |                             |        |                |                        |
| .XX ±0.1 |           |          |                             |        |                |                        |
| UNITS:   | MM        | PART NO: | xxx                         | TITLE: |                | SPM010P-AT-B PV Module |
| APPD BY  | CHECK BY  | DRAWN BY | DWG NO:                     |        | SPM010PAI5G002 |                        |
|          |           |          | SCALE                       | SHEET  | REV.           |                        |
|          |           |          | NDNE                        | 1/2    | A              |                        |

## Product picture



Front



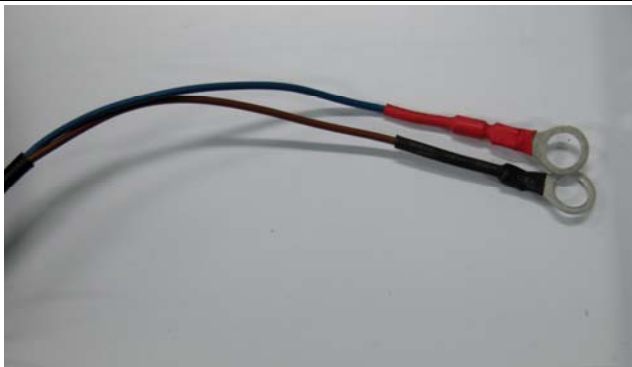
Back



Anodized aluminium



Junction



Cable



Accessory