

## SPM120P-SM

### Multiply-crystalline Silicon Photovoltaic Module

#### FEATURE:

- TUV certification
- UL certification
- High power module using 6" multiply crystalline solar cell.
- Using low iron tempered glass, EVA laminate TPT backsheet.
- Anodize aluminum frame protected.
- 10 years limited warranty of 90% power output and 25 years limited warranty of 80% power output.
- diodes to avoid power decreasing by shade.



**ELECTRICAL CHARACTERISTICS**

	SPM125P-SM	SPM120P-SM
Power at STC (Pm)	125W	120W
Maximum power voltage (Vpm)	34.3V	33.9V
Maximum power current (Ipm)	3.72A	3.63A
Open circuit voltage (Voc)	41.7V	41.3V
Short circuit current (Isc)	3.9A	3.88A
Tolerance	±5%	±5%
Module efficiency	12.48%	11.97%
Maximum system voltage	1000V DC	
Standard test conditions	Temperature 25°C, Irradiance 1000W/m <sup>2</sup> , AM=1.5	
Temperature coefficient	Isc: 0.05%/K	Voc: -0.36%/K Pmax: -0.46%/K

**Specifications**

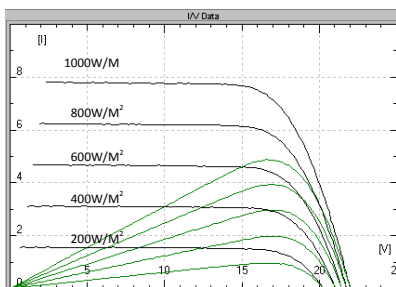
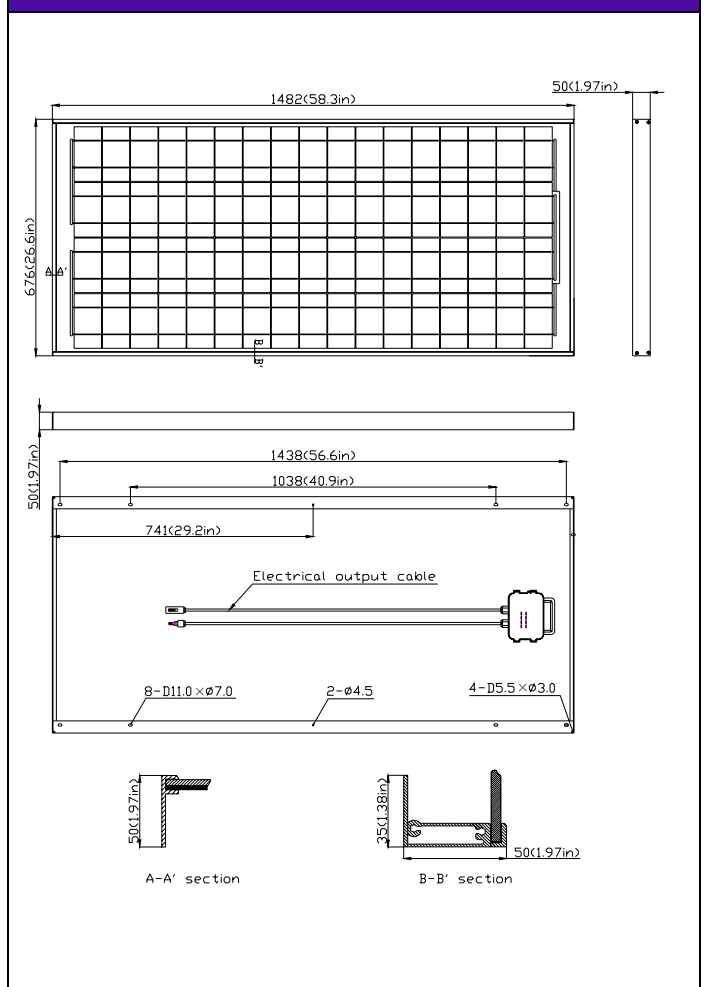
Cell	Polycrystalline silicon solar cell, (156mmx78mm)
No. of cell and connection	68 (4x17)
Dimension	1482mm (58.3in) x 676mm (26.6in) x 50mm (1.97in)
Weight	12KG

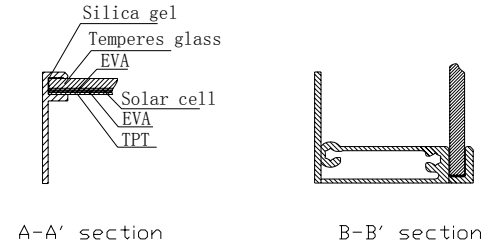
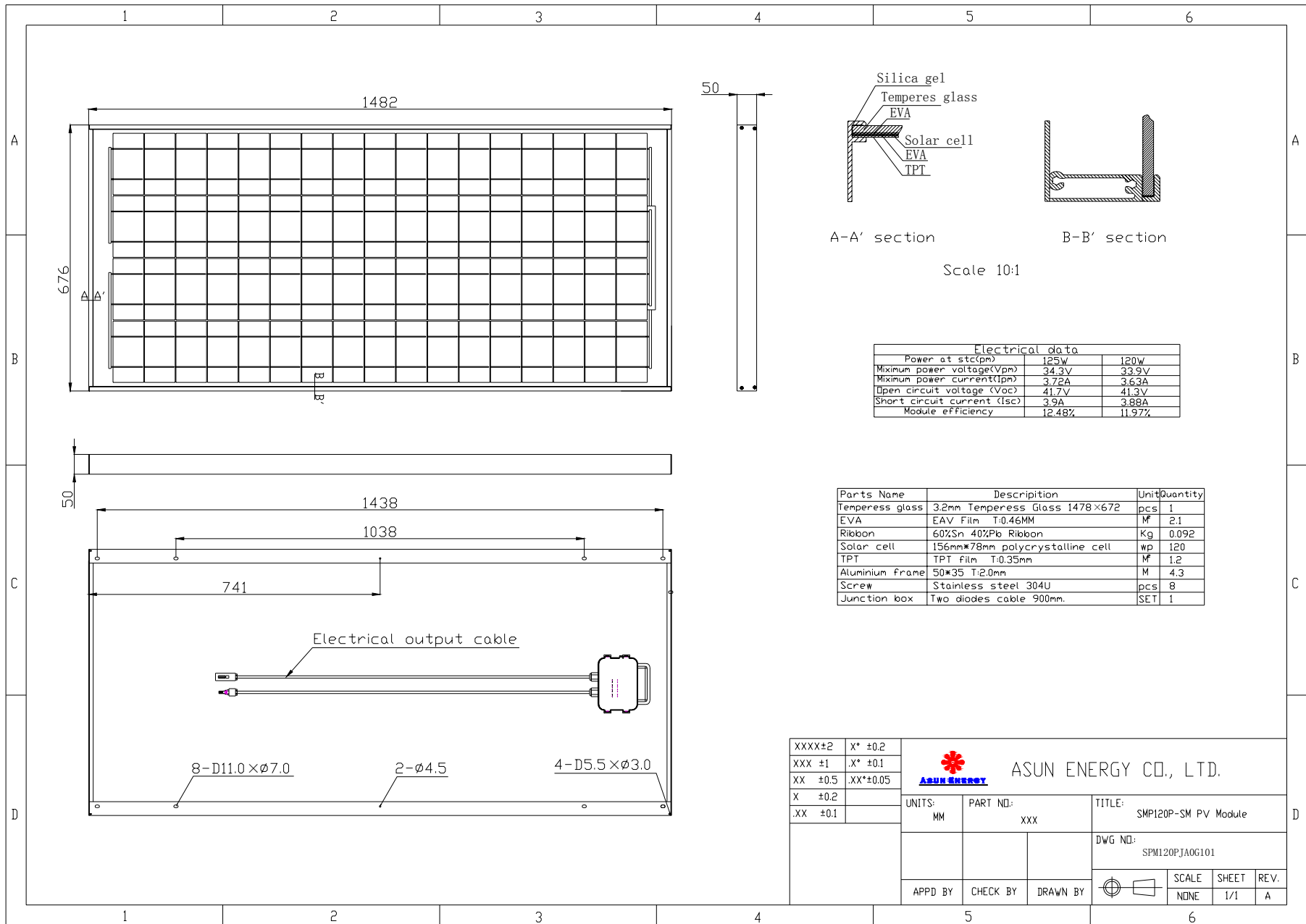
**AMBIENT CONDITIONS**

Operating Temperature	-40°C to +85°C
Storage Humidity	<90%

**Output**

Type of output terminal	Junction box
Cable	Length 900mm

**IV CURVES**

**OUTLINE DIMENSIONS**




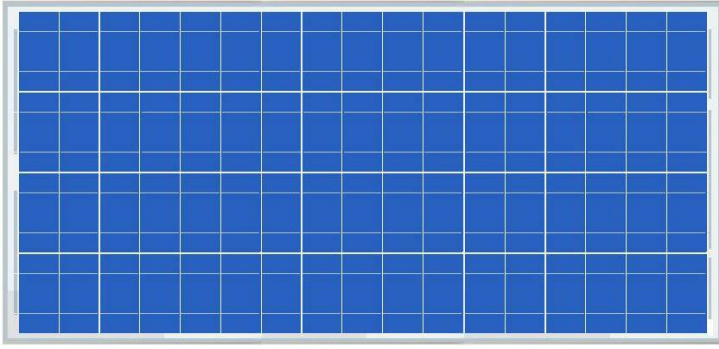
Scale 10:1

Electrical data		
Power at stc(p <sub>m</sub> )	125W	120W
Maximum power voltage(V <sub>pm</sub> )	34.3V	33.9V
Maximum power current(I <sub>pm</sub> )	3.72A	3.63A
Open circuit voltage (V <sub>oc</sub> )	41.7V	41.3V
Short circuit current (I <sub>sc</sub> )	3.9A	3.88A
Module efficiency	12.48%	11.97%

Parts Name	Description	Unit	Quantity
Temperess glass	3.2mm Temperess Glass 1478×672	pcs	1
EVA	EAV Film T:0.46MM	M	2.1
Ribbon	60%Sn 40%Pb Ribbon	Kg	0.092
Solar cell	156mm*78mm polycrystalline cell	wp	120
TPT	TPT film T:0.35mm	M	1.2
Aluminium frame	50*35 T:2.0mm	M	4.3
Screw	Stainless steel 304U	pcs	8
Junction box	Two diodes cable 900mm.	SET	1

XXXX±2	X* ±0.2	 <b>ASUN ENERGY CO., LTD.</b>	<b>TITLE:</b> SMP120P-SM PV Module		
XXX ±1	X* ±0.1		<b>UNITS:</b> MM	<b>PART NO.:</b> XXX	<b>DWG NO.:</b> SPM120PJA0G101
XX ±0.5	XX*±0.05		<b>APPD BY:</b>	<b>CHECK BY:</b>	<b>DRAWN BY:</b>
X ±0.2				<b>SCALE:</b> NONE	<b>SHEET:</b> 1/1
.XX ±0.1				<b>REV.:</b> A	

# Product picture



Front



Back



Anodize aluminum



Junction