

SPM020P-AT-B

Multicrystalline Silicon Photovoltaic Module

FEATURE:

- TUV certification
- UL certification
- High power module using 6" Multicrystalline solar cell.
- Using low iron tempered glass, EVA laminate TPT backsheet.
- Anodize aluminum frame protected.
- 10 years limited warranty of 90% power output and 25 years limited warranty of 80% power output.
- diodes to avoid power decreasing by shade.

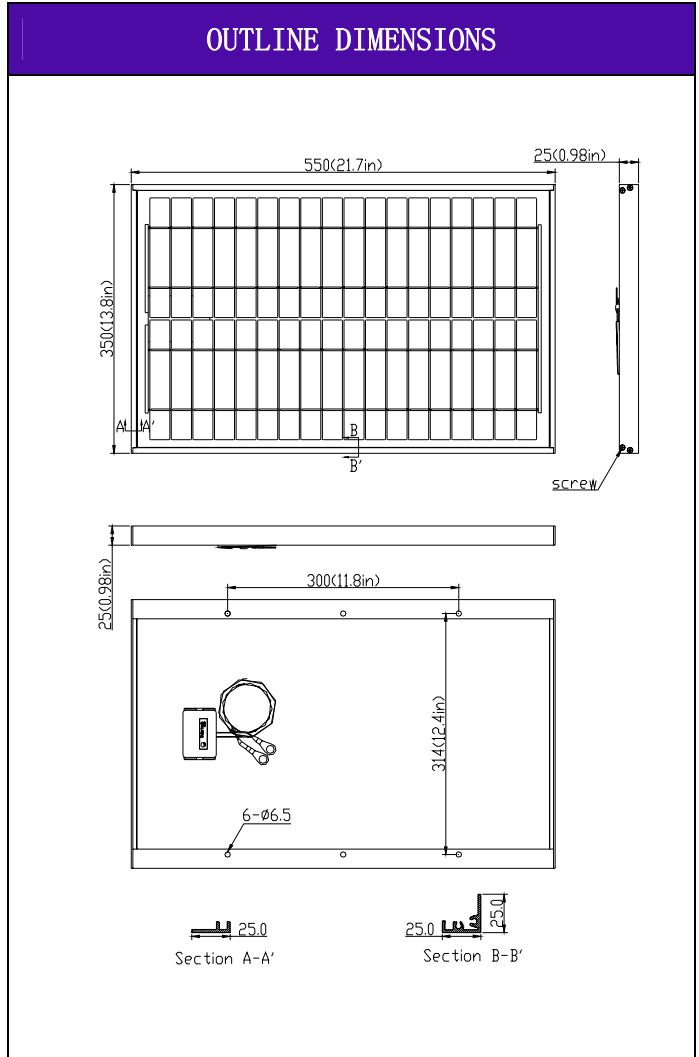
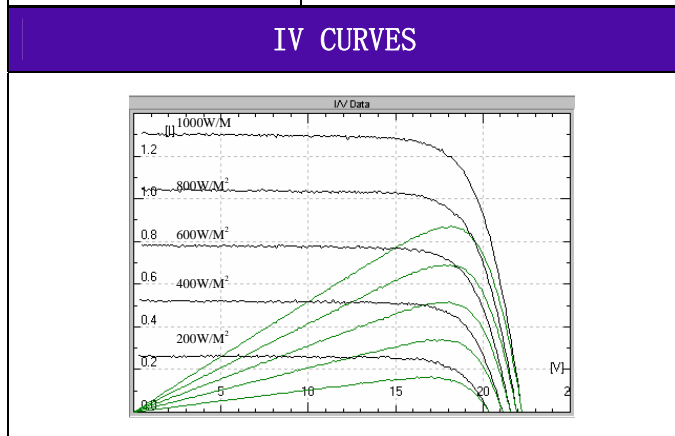


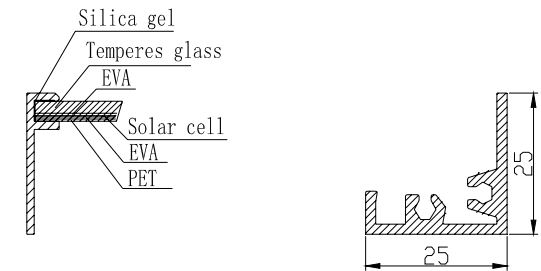
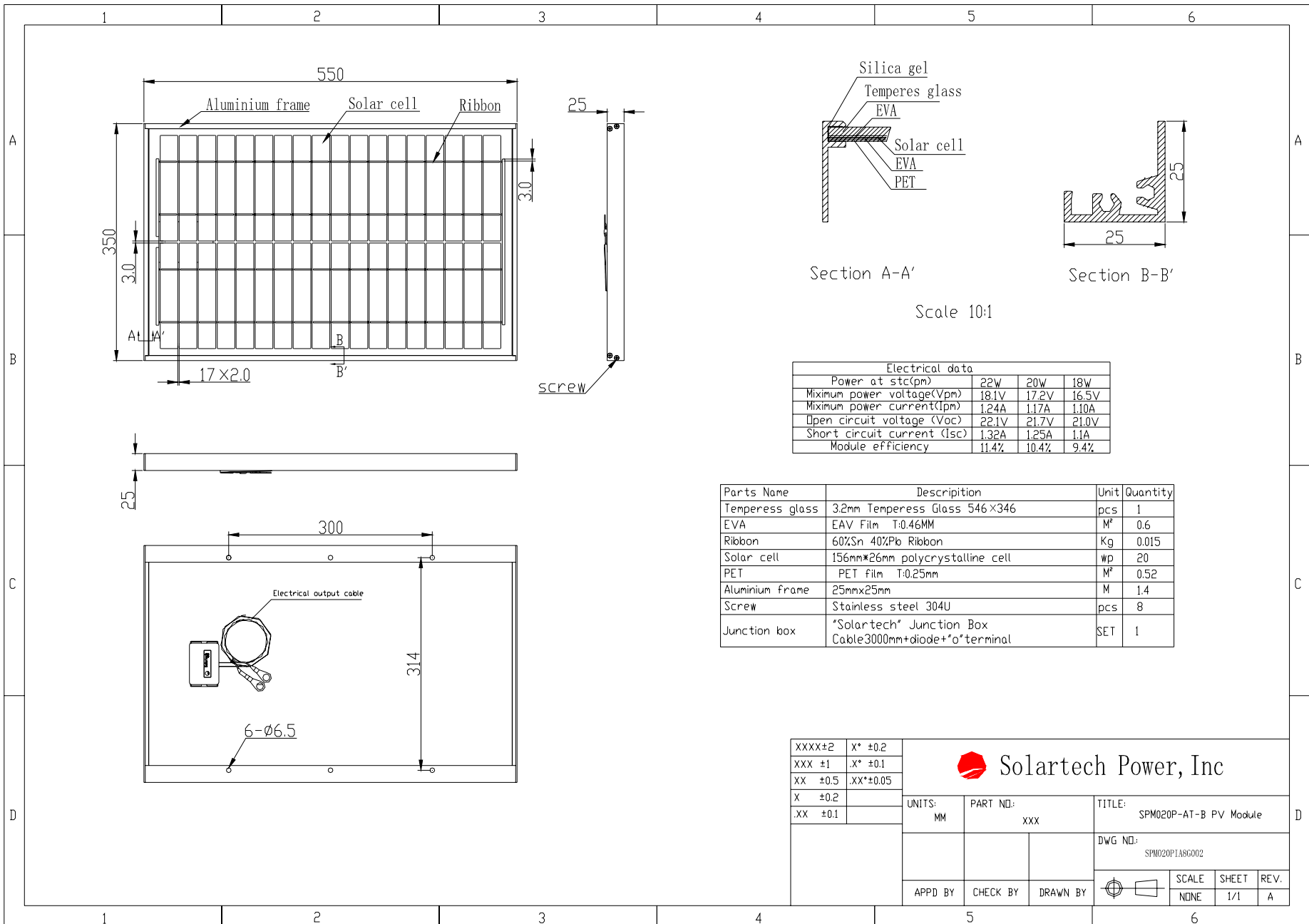
| ELECTRICAL CHARACTERISTICS | | | |
|---|--|---------------------------|----------------------------|
| | SPM022P-AT-B | SPM020P-AT-B | SPM018P-AT-B |
| Power at STC(P _m) | 22W | 20W | 18W |
| Maximum power voltage(V _{pm}) | 18.1V | 17.2V | 16.5V |
| Maximum power current(I _{pm}) | 1.24A | 1.17A | 1.10A |
| Open circuit voltage(V _{oc}) | 22.1V | 21.7V | 21.0V |
| Short circuit current(I _{sc}) | 1.32A | 1.25A | 1.1A |
| Tolerance | ±5% | ±5% | ±5% |
| Module efficiency | 11.4% | 10.4% | 9.4% |
| Maximum system voltage | 1000V DC | | |
| Standard test conditions | Temperature 25°C, Irradiance 1000W/m ² , AM=1.5 | | |
| Temperature coefficient | I _{sc} :0.05%/K | V _{oc} :-0.36%/K | P _{max} :-0.46%/K |

| Specifications | |
|----------------------------|---|
| Cell | Multicrystalline silicon solar cell, (156mmx26mm) |
| No. of cell and connection | 36 (2x18) |
| Dimension | 550mm (21.7in) x350mm (13.8in)x25mm (0.98in) |
| Weight | 2.8KG |

| AMBIENT CONDITIONS | |
|-----------------------|----------------|
| Operating Temperature | -40°C to +85°C |
| Storage Humidity | <90% |

| OUT PUT | |
|-------------------------|-----------------------------------|
| Type of output terminal | Junction box+diode + "0" terminal |
| Cable | Length 3000mm |





Section A-A'
Section B-B'
Scale 10:1

| Electrical data | | | |
|--|-------|-------|-------|
| Power at stc(p _m) | 22w | 20w | 18w |
| Maximum power voltage(V _{pm}) | 18.1V | 17.2V | 16.5V |
| Maximum power current(I _{pm}) | 1.24A | 1.17A | 1.10A |
| Open circuit voltage (V _{oc}) | 22.1V | 21.7V | 21.0V |
| Short circuit current (I _{sc}) | 1.32A | 1.25A | 1.1A |
| Module efficiency | 11.4% | 10.4% | 9.4% |

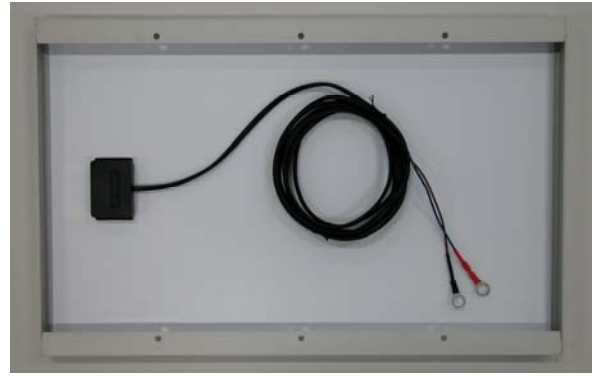
| Parts Name | Description | Unit | Quantity |
|-----------------|---|----------------|----------|
| Temperess glass | 3.2mm Temperess Glass 546×346 | pcs | 1 |
| EVA | EAV Film T:0.46MM | M ² | 0.6 |
| Ribbon | 60%Sn 40%Pb Ribbon | Kg | 0.015 |
| Solar cell | 156mm*26mm polycrystalline cell | wp | 20 |
| PET | PET film T:0.25mm | M ² | 0.52 |
| Aluminium frame | 25mmx25mm | M | 1.4 |
| Screw | Stainless steel 304U | pcs | 8 |
| Junction box | *Solartech* Junction Box Cable3000mm+diode+‘o’terminal | SET | 1 |

| | | | | | | | | | | | |
|----------|-----------|---------|-----------------------------|----------------|------------------------|---|-------|-------|------|------|-----|
| XXXX±2 | X* ±0.2 | | Solartech Power, Inc | | | | | | | | |
| XXX ±1 | .X* ±0.1 | | | | | | | | | | |
| XX ±0.5 | .XX*±0.05 | | | | | | | | | | |
| X ±0.2 | | | | | | | | | | | |
| .XX ±0.1 | | UNITS: | PART NO: | TITLE: | SPM020P-AT-B PV Module | | | | | | |
| | | MM | xxx | DWG NO: | | | | | | | |
| | | | | SPM020P1A8G002 | | | | | | | |
| | | APPD BY | CHECK BY | DRAWN BY | | <table border="1"> <tr> <td>SCALE</td> <td>SHEET</td> <td>REV.</td> </tr> <tr> <td>NONE</td> <td>1/1</td> <td>A</td> </tr> </table> | SCALE | SHEET | REV. | NONE | 1/1 |
| SCALE | SHEET | REV. | | | | | | | | | |
| NONE | 1/1 | A | | | | | | | | | |

Product picture



Front



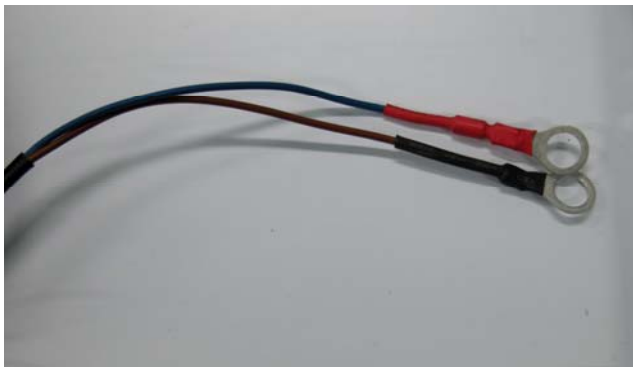
Back



Anodize aluminum



Junction



Output terminal



Accessory