



SPM005P-DR-B

Multicrystalline Silicon Photovoltaic Module

FEATURE:

- TUV certification
- UL certification
- High power module using 6" Multicrystalline solar cell.
- Using low iron tempered glass, EVA laminate PET backsheet.
- Anodize aluminum frame protected.
- 10 years limited warranty of 90% power output and 25 years limited warranty of 80% power output.



ELECTRICAL CHARACTERISTICS

	SPM006P-DR-B	SPM005P-DR-B	SPM004P-DR-B
Power at STC(P _m)	6W	5W	4W
Maximum power voltage(V _{pm})	17.3V	17.1V	16.2V
Maximum power current(I _{pm})	0.35A	0.29A	0.24A
Open circuit voltage(V _{oc})	21.8V	21.7V	21
Short circuit current(I _{sc})	0.38A	0.31A	0.28
Tolerance	±5%	±5%	±5%
Module efficiency	7.7%	6.5%	5.1%
Maximum system voltage	1000V DC		
Standard test conditions	Temperature 25°C, Irradiance 1000W/m ² , AM=1.5		
Temperature coefficient	I _{sc} :0.05%/K	V _{oc} :-0.36%/K	P _{max} :-0.46%/K

Specifications

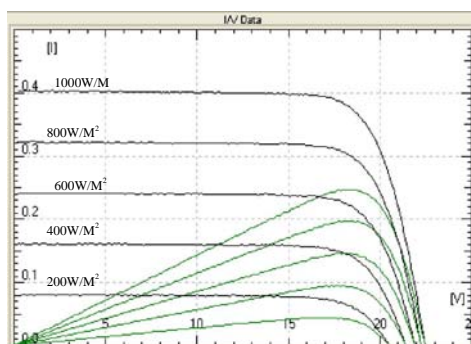
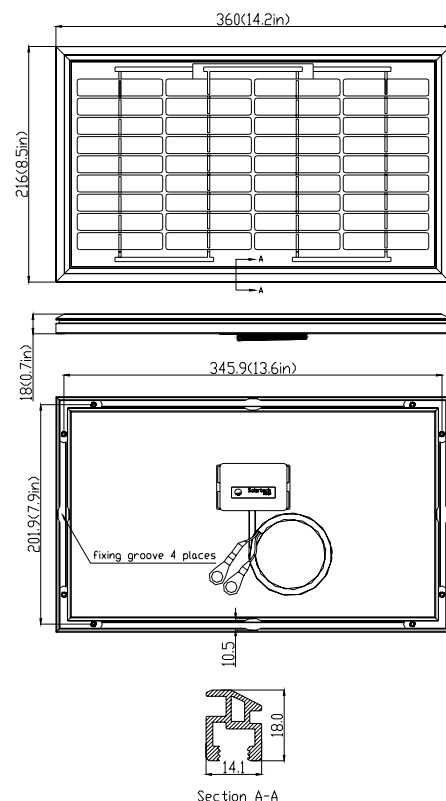
Cell	Multicrystalline silicon solar cell, (78mmx15.6mm)
No. of cell and connection	36(4x9)
Dimension	360mm (14.2in) x216mm(8.5in)x18mm(0.7in)
Weight	1.2 KG

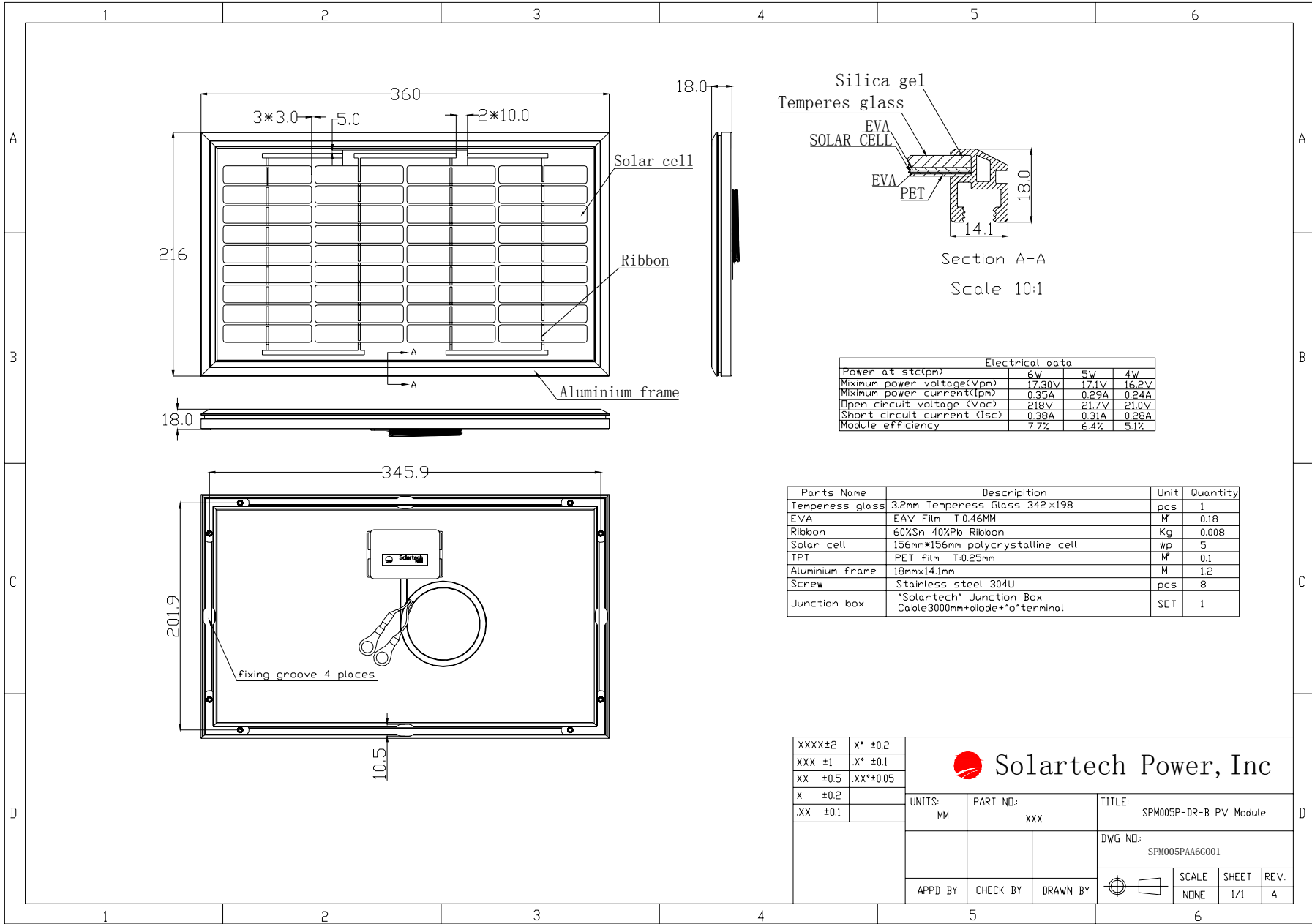
AMBIENT CONDITIONS

Operating Temperature	-40°C to +85°C
Storage Humidity	<90%

OUT PUT


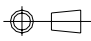
Type of output terminal	Junction box+diode + "0" terminal
Cable	Length 3000mm

IV CURVES

OUTLINE DIMENSIONS




Electrical data			
Power at stc(pn)	6w	5w	4w
Maximum power voltage(Vpm)	17.30V	17.1V	16.2V
Maximum power current(Ipm)	0.35A	0.29A	0.24A
Open circuit voltage (Voc)	21.8V	21.7V	21.0V
Short circuit current (Isc)	0.38A	0.31A	0.28A
Module efficiency	7.7%	6.4%	5.1%

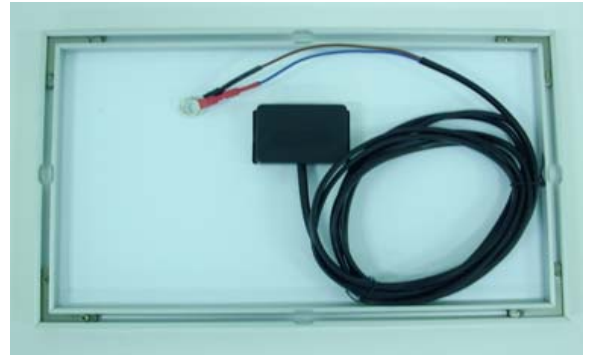
Parts Name	Description	Unit	Quantity
Temperess glass	3.2mm Temperess Glass 342x198	pcs	1
EVA	EAV Film T:0.46MM	M	0.18
Ribbon	60%Sn 40%Pb Ribbon	Kg	0.008
Solar cell	156mm*156mm polycrystalline cell	wp	5
TPT	PET film T:0.25mm	M	0.1
Aluminium frame	18mmx14.1mm	M	1.2
Screw	Stainless steel 304U	pcs	8
Junction box	"Solartech" Junction Box Cable3000mm+diode+o'terminal	SET	1

XXXX±2	X* ±0.2	 Solartech Power, Inc	UNITS: MM PART NO: xxx TITLE: SPM005P-DR-B PV Module														
XXX ±1	.X* ±0.1					DWG NO: SPM005PAA6G001											
XX ±0.5	.XX*±0.05								<table border="1"> <tr> <td>SCALE</td> <td>SHEET</td> <td>REV.</td> </tr> <tr> <td>NDNE</td> <td>1/1</td> <td>A</td> </tr> </table>			SCALE	SHEET	REV.	NDNE	1/1	A
SCALE	SHEET											REV.					
NDNE	1/1											A					
X ±0.2		<table border="1"> <tr> <td>APPD BY</td> <td>CHECK BY</td> <td>DRAWN BY</td> </tr> <tr> <td></td> <td></td> <td></td> </tr> </table>			APPD BY							CHECK BY	DRAWN BY				
APPD BY	CHECK BY				DRAWN BY												
.XX ±0.1																	

Product picture



Front



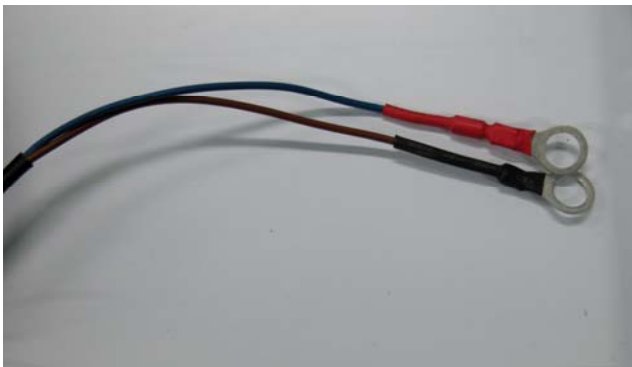
Back



Anodize aluminum



Junction



Output terminal



Accessory