



## SPM005P-NT-B

### Multicrystalline Silicon Photovoltaic Module

#### FEATURE:

- TUV certification
- UL certification
- High power module using 6" Multicrystalline solar cell.
- Using low iron tempered glass, EVA laminate PET backsheet.
- Anodize aluminum frame protected.
- 10 years limited warranty of 90% power output and 25 years limited warranty of 80% power output.



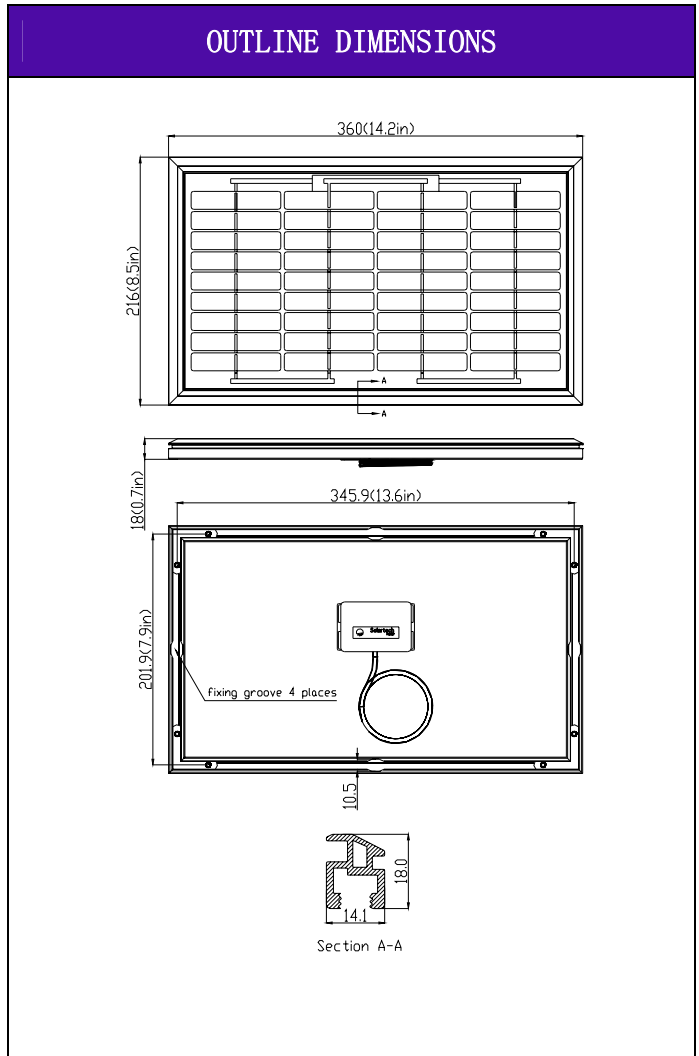
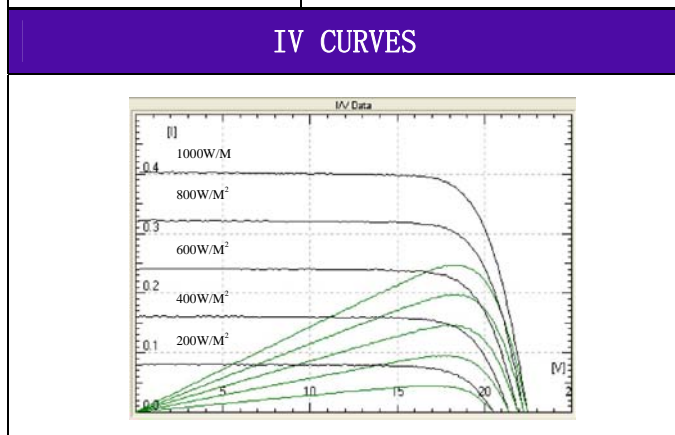
Solartech Power, Inc.  
13811 Bentley Place, Cerritos, CA 90703  
Tel:562-926-1089 Fax:562-926-1021  
[www.solartechpower.com](http://www.solartechpower.com)  
[sales@solartechpower.com](mailto:sales@solartechpower.com)

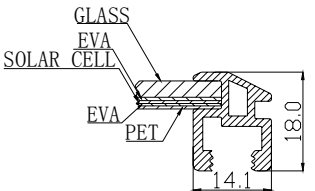
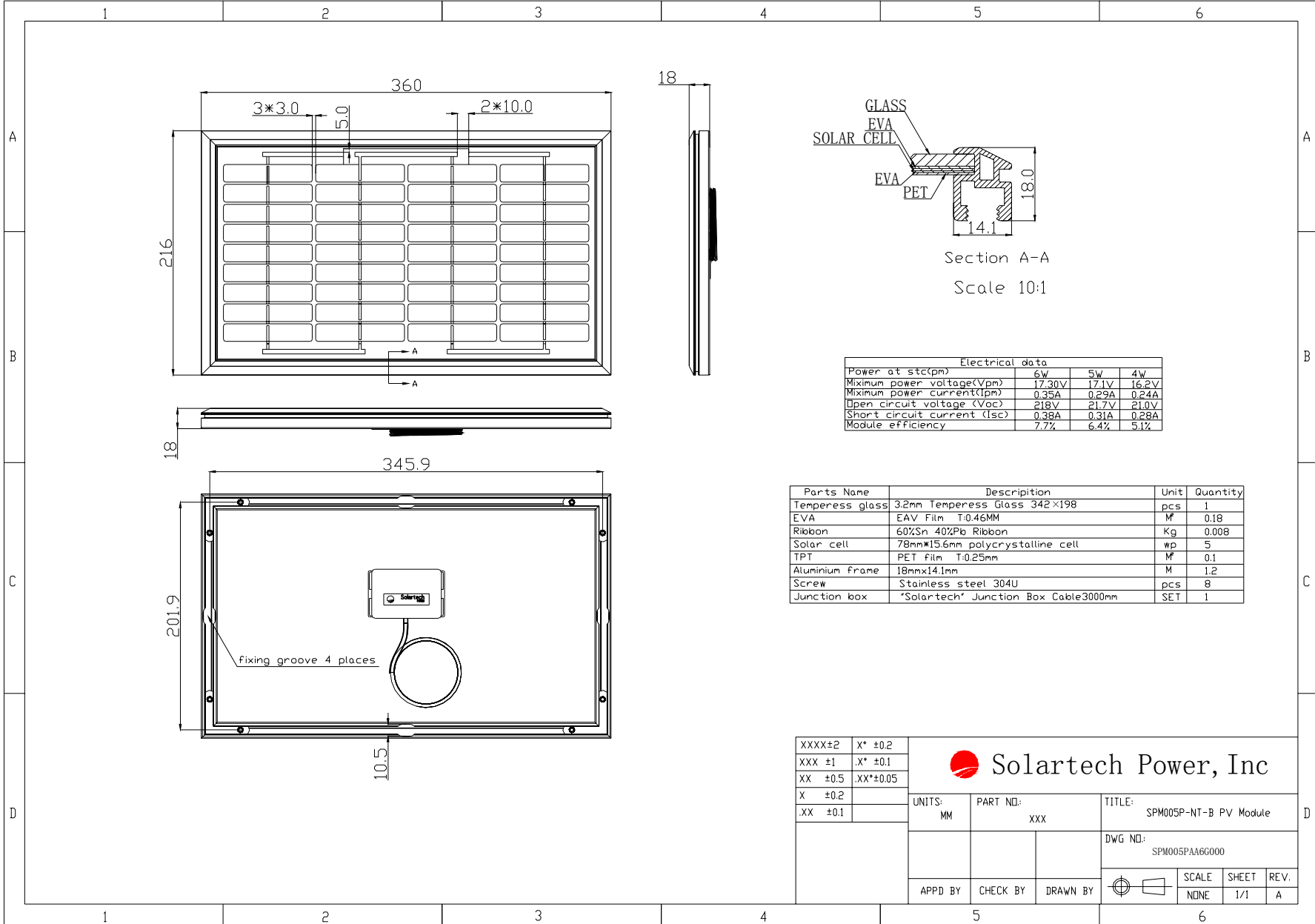
ELECTRICAL CHARACTERISTICS			
	SPM006P-NT-B	SPM005P-NT-B	SPM004P-NT-B
Power at STC(P <sub>m</sub> )	6W	5W	4W
Maximum power voltage(V <sub>pm</sub> )	17.3V	17.1V	16.2V
Maximum power current(I <sub>pm</sub> )	0.35A	0.29A	0.24A
Open circuit voltage(V <sub>oc</sub> )	21.8V	21.7V	21.4V
Short circuit current(I <sub>sc</sub> )	0.38A	0.31A	0.28
Tolerance	±5%	±5%	±5%
Module efficiency	7.7%	6.5%	5.1%
Maximum system voltage	1000V DC		
Standard test conditions	Temperature 25°C, Irradiance 1000W/m <sup>2</sup> , AM=1.5		
Temperature coefficient	I <sub>sc</sub> :0.05%/K	V <sub>oc</sub> :-0.36%/K	P <sub>max</sub> :-0.46%/K

Specifications	
Cell	Multicrystalline silicon solar cell, (78mmx15.6mm)
No. of cell and connection	36(4x9)
Dimension	360mm (14.2in) x216mm(8.5in)x18mm(0.7in)
Weight	1.2KG

AMBIENT CONDITIONS	
Operating Temperature	-40°C to +85°C
Storage Humidity	<90%

OUT PUT	
Type of output terminal	Junction box
Cable	Length 3000mm






Section A-A  
Scale 10:1

Electrical data				
Power at stc(p <sub>m</sub> )	6W	5W	4W	
Maximum power voltage(V <sub>pm</sub> )	17.30V	17.1V	16.2V	
Maximum power current(I <sub>pm</sub> )	0.35A	0.29A	0.24A	
Open circuit voltage (V <sub>oc</sub> )	21.8V	21.7V	21.0V	
Short circuit current (I <sub>sc</sub> )	0.38A	0.31A	0.28A	
Module efficiency	7.7%	6.4%	5.1%	

Parts Name	Description	Unit	Quantity
Temperess glass	3.2mm Temperess Glass 342×198	pcs	1
EVA	EAV Film T:0.46MM	M <sup>2</sup>	0.18
Ribbon	60%Sn 40%Pb Ribbon	Kg	0.008
Solar cell	78mm×15.6mm polycrystalline cell	wp	5
TPT	PET film T:0.25mm	M <sup>2</sup>	0.1
Aluminium frame	18mm×14.1mm	M	1.2
Screw	Stainless steel 304U	pcs	8
Junction box	*Solartech* Junction Box Cable3000mm	SET	1

XXXX±2	X* ±0.2
XXX ±1	.X* ±0.1
XX ±0.5	.XX*±0.05
X ±0.2	
.XX ±0.1	

 Solartech Power, Inc

UNITS: MM	PART NO: XXX	TITLE: SPM005P-NT-B PV Module
APPD BY	CHECK BY	DRAWN BY
DWG NO: SPM005PAA6G000		SCALE SHEET REV. NONE 1/1 A

## Product picture



Front



Back



Anodized aluminium



Junction



Cable



Accessory