

## SPM080P-NL

### Multicrystalline Silicon Photovoltaic Module

#### FEATURE:

- TUV certification
- UL certification
- High power module using 6" Multicrystalline solar cell.
- Using low iron tempered glass, EVA laminate TPT backsheet.
- Anodize aluminum frame protected.
- 10 years limited warranty of 90% power output and 25 years limited warranty of 80% power output.
- diodes to avoid power decreasing by shade.



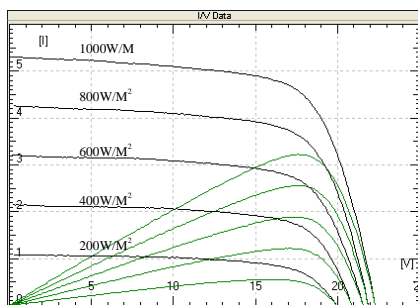
ELECTRICAL CHARACTERISTICS			
	SPM090P-NL	SPM085P-NL	SPM080P-NL
Power at STC (Pm)	90W	85W	80W
Maximum power voltage (Vpm)	18.3V	17.9V	17.3V
Maximum power current (Ipm)	5.04A	4.84A	4.7A
Open circuit voltage (Voc)	22.2V	21.9V	21.9V
Short circuit current (Isc)	5.38A	5.17A	5.1A
Tolerance	±5%	±5%	±5%
Module efficiency	13.27%	12.53%	11.79%
Maximum system voltage	1000V DC		
Standard test conditions	Temperature 25°C, Irradiance 1000W/m <sup>2</sup> , AM=1.5		
Temperature coefficient	Isc: 0.05%/K	Voc: -0.36%/K	Pmax: -0.46%/K

Specifications	
Cell	Multicrystalline silicon solar cell, (156mmx104mm)
No. of cell and connection	36 (4x9)
Dimension	1014mm (39.9in) x 669mm (26.3in) x 35mm (1.38in)
Weight	9KG

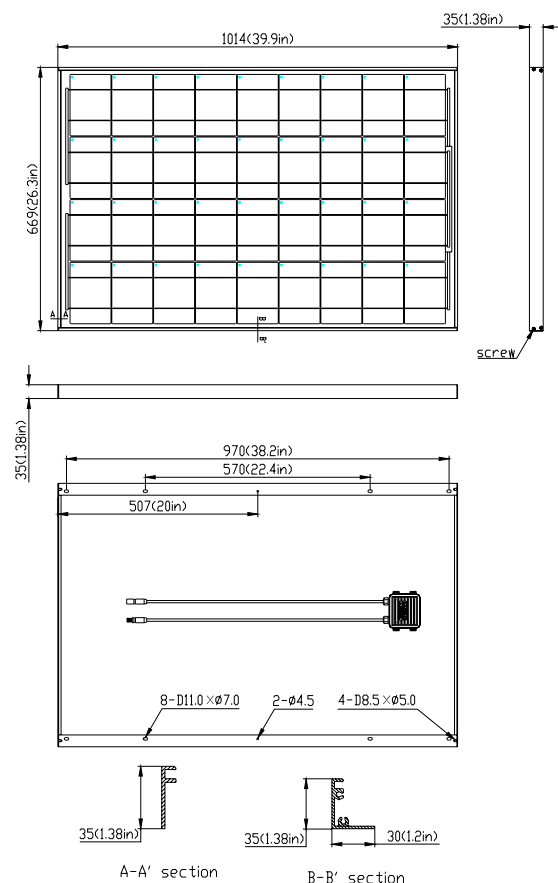
AMBIENT CONDITIONS	
Operating Temperature	-40°C to +85°C
Storage Humidity	<90%

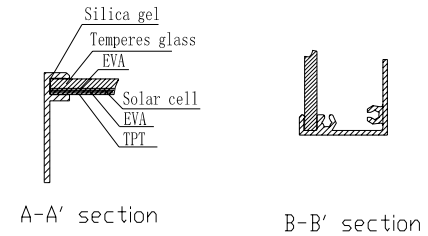
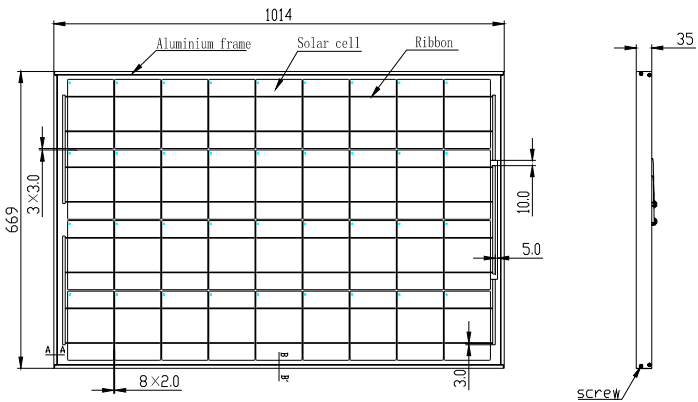
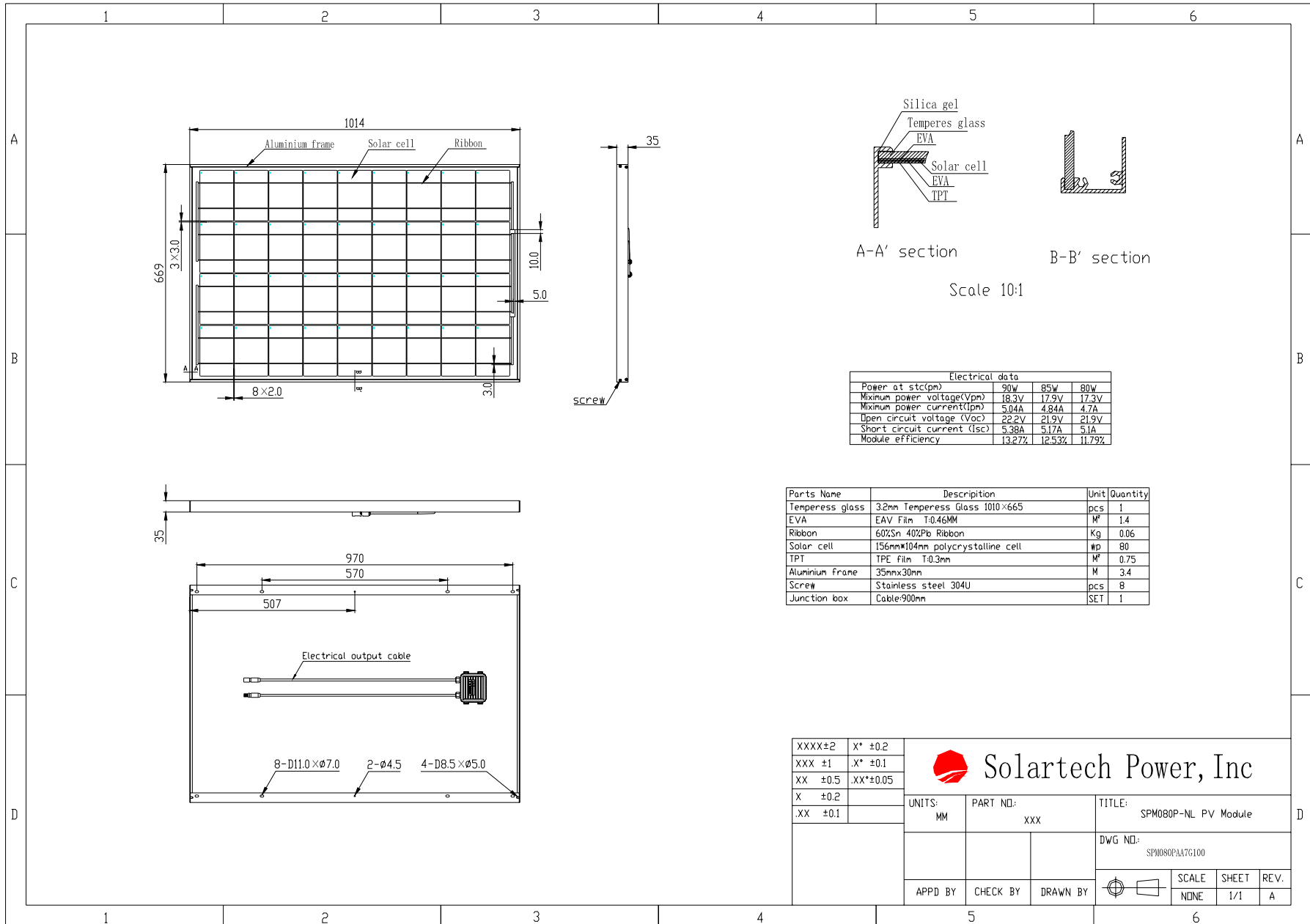
OUT PUT	
Type of output terminal	Junction box
Cable	Length 900mm

### IV CURVES



### OUTLINE DIMENSIONS

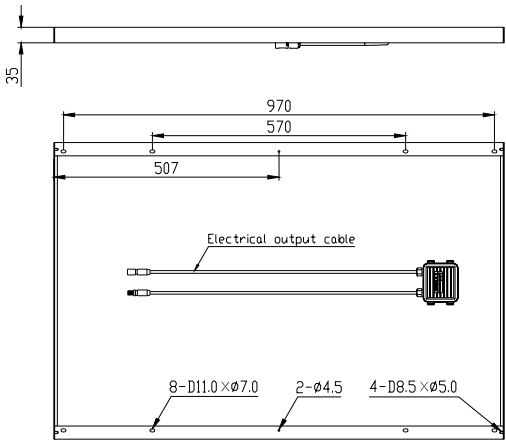




Scale 10:1

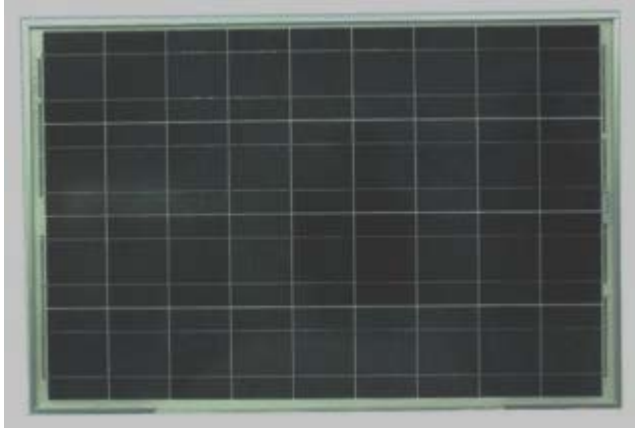
Electrical data			
Power at stc(pm)	90W	85W	80W
Maximum power voltage(Vpm)	18.3V	17.9V	17.3V
Maximum power current(Ipm)	5.04A	4.84A	4.7A
Open circuit voltage (Voc)	22.2V	21.9V	21.9V
Short circuit current (Isc)	5.38A	5.17A	5.1A
Module efficiency	13.27%	12.53%	11.79%

Parts Name	Description	Unit	Quantity
Temperess glass	3.2mm Temperess Glass 1010×665	pcs	1
EVA	EAV Film T-0.46MM	M <sup>2</sup>	1.4
Ribbon	60%Sn 40%Pb Ribbon	Kg	0.06
Solar cell	156mm*104mm polycrystalline cell	WP	80
TPT	TPE Film T-0.3mm	M <sup>2</sup>	0.75
Aluminium frame	35mmx30mm	M	3.4
Screw	Stainless steel 304U	pcs	8
Junction box	Cable:900mm	SET	1



XXXX±2	X* ±0.2		<b>Solartech Power, Inc</b>				
XXX ±1	.X* ±0.1						
XX ±0.5	.XX*±0.05	UNITS:	PART NO.:	TITLE:			
X ±0.2		MM	XXX	SPM080P-NL PV Module			
.XX ±0.1		APPD BY	CHECK BY	DRAWN BY	DWG NO.:		
					SPM080PAA7G100		
					SCALE	SHEET	REV.
					NONE	1/1	A

# Product picture



Front



Back



Aluminium alloy



Junction