

## SPM080P-SL

### Multicrystalline Silicon Photovoltaic Module

#### FEATURE:

- TUV certification
- UL certification
- High power module using 6" Multicrystalline solar cell.
- Using low iron tempered glass, EVA laminate TPT backsheet.
- Anodize aluminum frame protected.
- 10 years limited warranty of 90% power output and 25 years limited warranty of 80% power output.
- diodes to avoid power decreasing by shade.

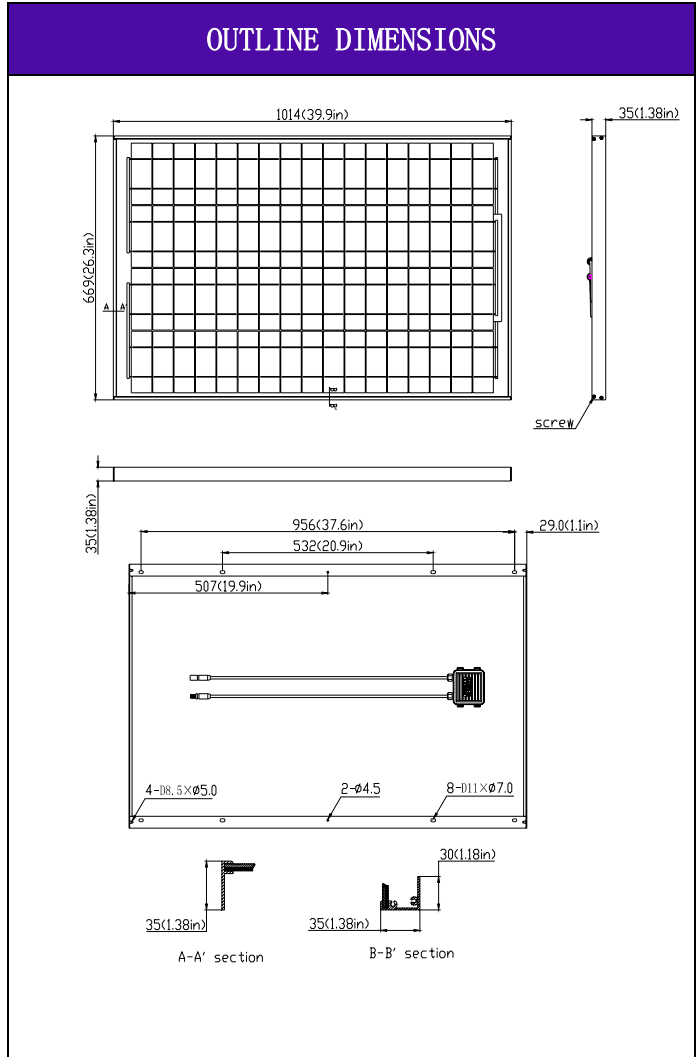
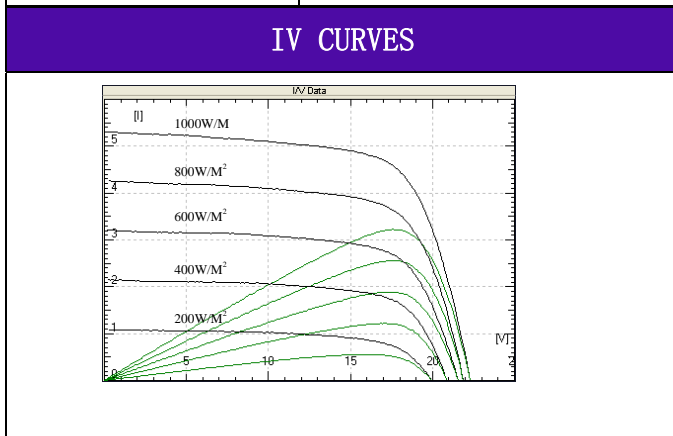


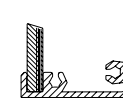
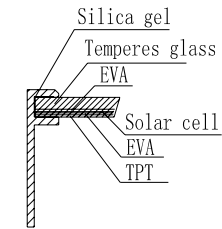
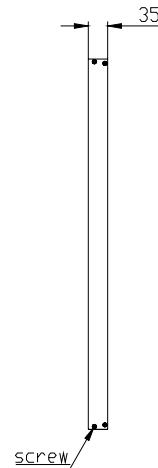
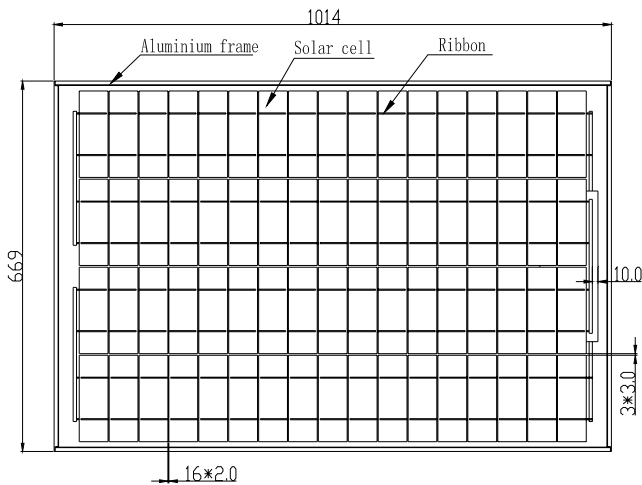
ELECTRICAL CHARACTERISTICS			
	SPM080P-SL		
Power at STC (Pm)	80W		
Maximum power voltage (Vpm)	34.0V		
Maximum power current (Ipm)	2.36A		
Open circuit voltage (Voc)	41.5V		
Short circuit current (Isc)	2.55A		
Tolerance	±5%		
Module efficiency	11.79%		
Maximum system voltage	1000V DC		
Standard test conditions	Temperature 25°C, Irradiance 1000W/m <sup>2</sup> , AM=1.5		
Temperature coefficient	Isc: 0.06%/K	Voc: -0.36%/K	Pmax: -0.5%/K

Specifications	
Cell	Multicrystalline silicon solar cell, (156mmx52mm)
No. of cell and connection	68 (4x17)
Dimension	1014mm (39.9in) x 669mm (26.3in) x 35mm (1.38in)
Weight	9KG

AMBIENT CONDITIONS	
Operating Temperature	-40°C to +85°C
Storage Humidity	<90%

OUT PUT	
Type of output terminal	Junction box
Cable	Length 900mm



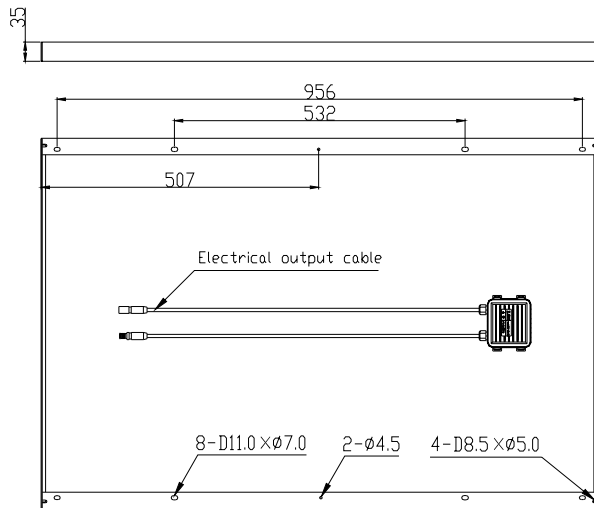


A-A' section

B-B' section

Scale 10:1

Electrical data	
Power at stc(p <sub>m</sub> )	80W
Minimum power voltage(V <sub>pm</sub> )	34.0V
Minimum power current(I <sub>pm</sub> )	2.36A
Open circuit voltage (V <sub>oc</sub> )	41.5V
Short circuit current (I <sub>sc</sub> )	2.55A
Module efficiency	11.79%



Parts Name	Description	Unit	Quantity
Temperess glass	3.2mm Temperess Glass 1003×665	pcs	1
EVA	EAV Film T:0.46MM	M <sup>2</sup>	1.45
Ribbon	60%Sn 40%Pb Ribbon	Kg	0.064
Solar cell	156mm*52mm polycrystalline cell	wp	80
TPT	TPE film T:0.3mm	M <sup>2</sup>	0.79
Aluminium frame	35mmx30mm	M	4.2
Screw	Stainless steel 304U	pcs	8
Junction box	Cable:900mm	SET	1

XXXX±2	X* ±0.2		<b>Solartech Power, Inc</b>		
XXX ±1	.X* ±0.1				
XX ±0.5	.XX*±0.05				
X ±0.2					
.XX ±0.1					
UNITS: MM		PART NO: xxx	TITLE: SPM080P-SL PV Module		
			DWG NO: SPM080PJA2G101		
APPD BY	CHECK BY	DRAWN BY	SCALE: NONE	SHEET: 1/2	REV: A

# Product picture



Front



Back



Aluminium alloy



Junction