

SPM080P-TL

Multicrystalline Silicon Photovoltaic Module

FEATURE:

- TUV certification
- UL certification
- High power module using 6" Multicrystalline solar cell.
- Using low iron tempered glass, EVA laminate TPE backsheet.
- Anodize aluminum frame protected.
- 10 years limited warranty of 90% power output and 25 years limited warranty of 80% power output.
- diodes to avoid power decreasing by shade.



Solartech Power, Inc.
13811 Bentley Place, Cerritos, CA 90703
Tel:562-926-1089 Fax:562-926-1021
www.solartechpower.com
sales@solartechpower.com

ELECTRICAL CHARACTERISTICS

| | SPM090P-TL | SPM085P-TL | SPM080P-TL |
|-----------------------------|--|---------------|----------------|
| Power at STC (Pm) | 90W | 85W | 80W |
| Maximum power voltage (Vpm) | 18.3V | 17.9V | 17.3V |
| Maximum power current (Ipm) | 5.04A | 4.84A | 4.7A |
| Open circuit voltage (Voc) | 22.2V | 21.9V | 21.9V |
| Short circuit current (Isc) | 5.38A | 5.17A | 5.1A |
| Tolerance | ±5% | ±5% | ±5% |
| Module efficiency | 13.27% | 12.53% | 11.79% |
| Maximum system voltage | 1000V DC | | |
| Standard test conditions | Temperature 25°C, Irradiance 1000W/m ² , AM=1.5 | | |
| Temperature coefficient | Isc:0.05%/ °C | Voc:-0.36%/°C | Pmax:-0.46%/°C |

Specifications

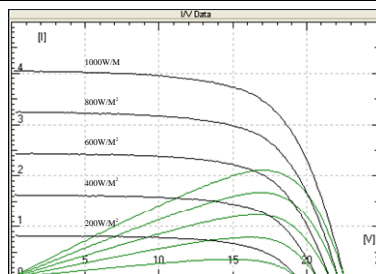
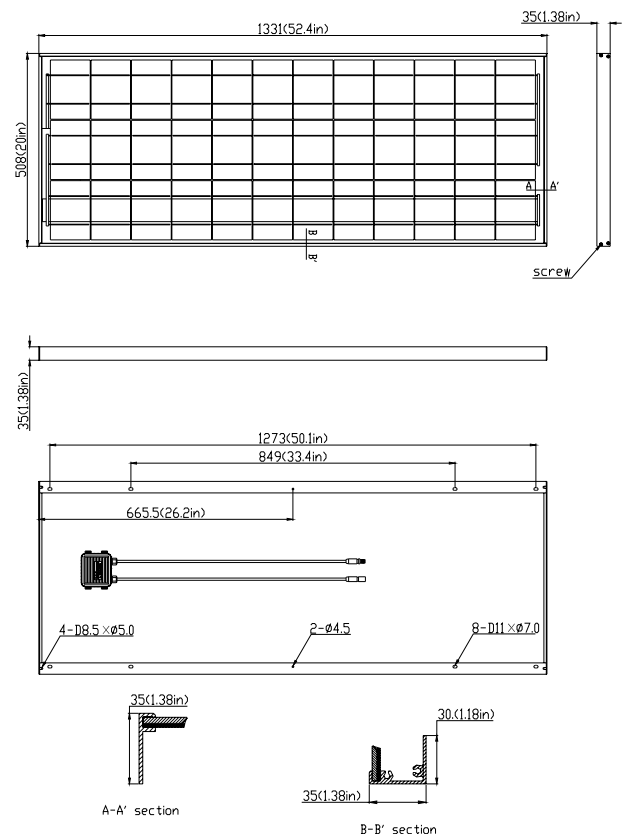
| | |
|----------------------------|--|
| Cell | Multicrystalline silicon solar cell, (156mmx104mm) |
| No. of cell and connection | 36 (3x12) |
| Dimension | 1331mm (52.4in)x508mm (20in)x35mm (1.38in) |
| Weight | 7KG |

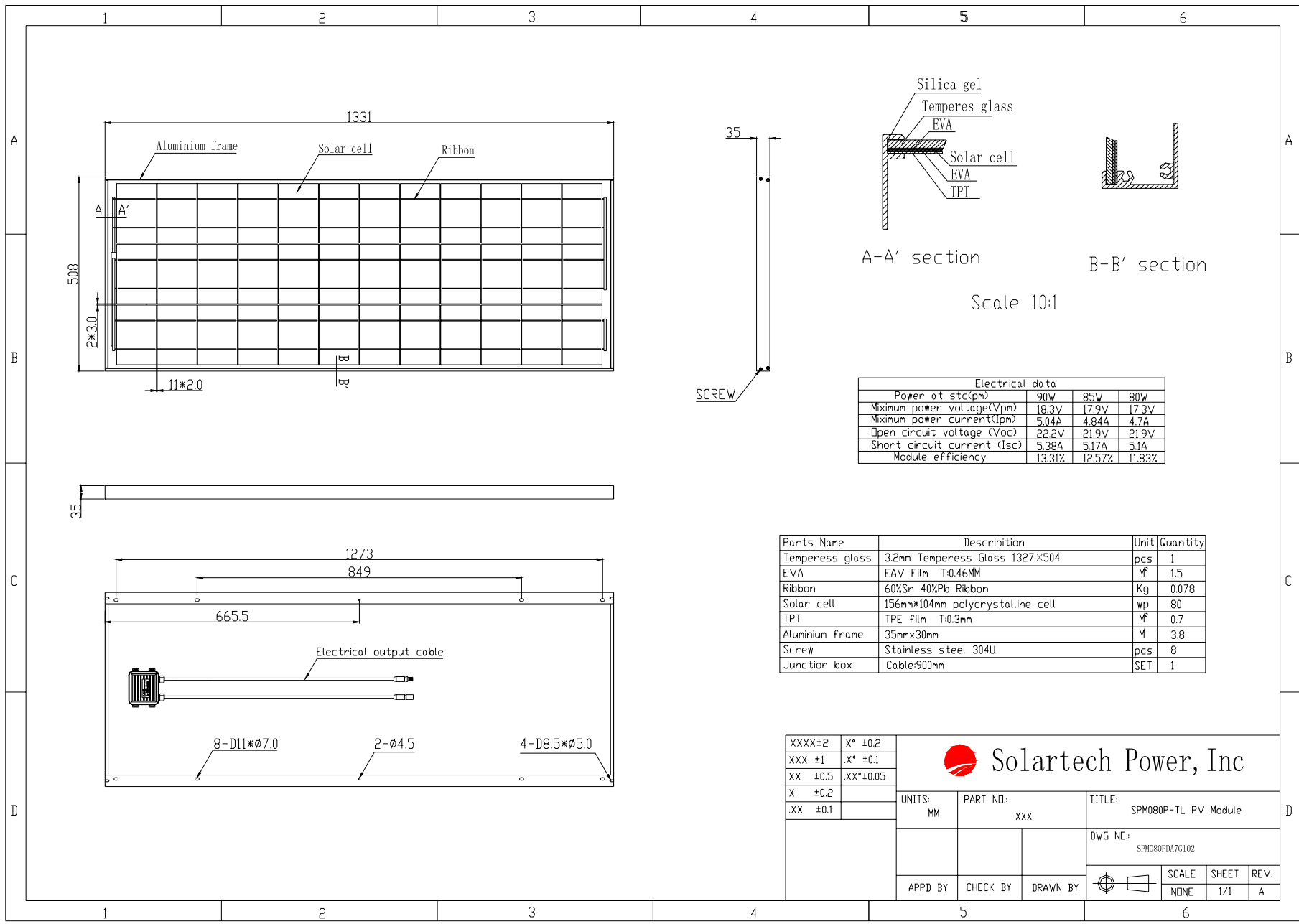
AMBIENT CONDITIONS

| | |
|-----------------------|----------------|
| Operating Temperature | -40°C to +85°C |
| Storage Humidity | <90% |

Output

| | |
|-------------------------|--------------|
| Type of output terminal | Junction box |
| Cable | Length 900mm |

IV CURVES

OUTLINE DIMENSIONS




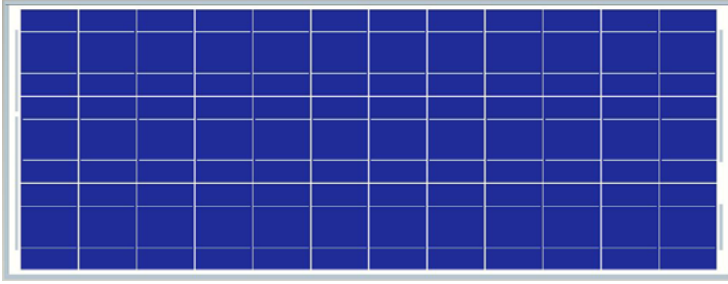
Electrical data

| | | | |
|--|--------|--------|--------|
| Power at stc(p _m) | 90W | 85W | 80W |
| Maximum power voltage(V _{pm}) | 18.3V | 17.9V | 17.3V |
| Maximum power current(I _{pm}) | 5.04A | 4.84A | 4.7A |
| Open circuit voltage (V _{oc}) | 22.2V | 21.9V | 21.9V |
| Short circuit current (I _{sc}) | 5.38A | 5.17A | 5.1A |
| Module efficiency | 13.31% | 12.57% | 11.83% |

| Parts Name | Description | Unit | Quantity |
|-----------------|----------------------------------|----------------|----------|
| Temperess glass | 3.2mm Temperess Glass 1327x504 | pcs | 1 |
| EVA | EAV Film T:0.46MM | M ² | 1.5 |
| Ribbon | 60%Sn 40%Pb Ribbon | Kg | 0.078 |
| Solar cell | 156mm*104mm polycrystalline cell | wp | 80 |
| TPT | TPE film T:0.3mm | M ² | 0.7 |
| Aluminium frame | 35mmx30mm | M | 3.8 |
| Screw | Stainless steel 304U | pcs | 8 |
| Junction box | Cable:900mm | SET | 1 |

| | | | | | | | | | | | |
|----------|-----------|-----------|-----------------------------|-----------------------------|---|-------|-------|------|------|-----|---|
| XXXX±2 | X* ±0.2 | | Solartech Power, Inc | | | | | | | | |
| XXX ±1 | .X* ±0.1 | | | | | | | | | | |
| XX ±0.5 | .XX*±0.05 | | | | | | | | | | |
| X ±0.2 | | UNITS: MM | PART NO: xxx | TITLE: SPM080P-TL PV Module | | | | | | | |
| .XX ±0.1 | | | | DWG NO: SPM080PDA7G102 | | | | | | | |
| | | APPD BY | CHECK BY | DRAWN BY | <table border="1"> <tr> <td>SCALE</td> <td>SHEET</td> <td>REV.</td> </tr> <tr> <td>NONE</td> <td>1/1</td> <td>A</td> </tr> </table> | SCALE | SHEET | REV. | NONE | 1/1 | A |
| SCALE | SHEET | REV. | | | | | | | | | |
| NONE | 1/1 | A | | | | | | | | | |

Product picture



Front



Back



Anodize aluminum



Junction